

WILKINSON ROAD (VARIABLE WIDTH PUBLIC RIGHT-OF-WAY)

NORTH LINE OF THE NORTHEAST 1/4 OF THE SOUTHEAST 1/4 OF SECTION 4

S89°47'55"E 1348.99'

S89°47'55"E 506.49'

SOUTH RIGHT-OF-WAY LINE

25'

40'

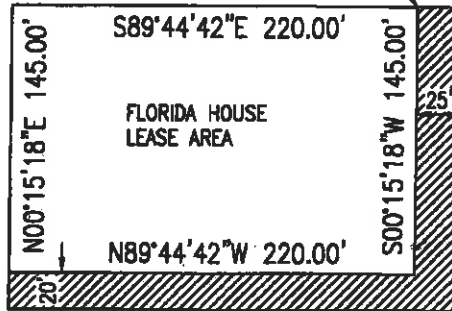
NORTHEAST CORNER OF THE NORTHEAST 1/4 OF THE SOUTHEAST 1/4 OF SECTION 4, TOWNSHIP 37 S., RANGE 18 E.

POINT OF BEGINNING
INTERSECTION OF THE SOUTH RIGHT-OF-WAY LINE OF WILKINSON ROAD AND THE WEST RIGHT-OF-WAY LINE OF BENEVA ROAD

NORTHEAST 1/4 OF THE SOUTHEAST 1/4 OF SECTION 4

POINT OF BEGINNING

N89°44'42"W 80.00'



WEST RIGHT-OF-WAY LINE S00°15'18"W 959.94'

EAST LINE OF THE SOUTHEAST 1/4 OF SECTION 24

BENEVA ROAD S00°15'18"W 2704.27'

(84' WIDE PUBLIC RIGHT-OF-WAY, ROAD PLAT BOOK 1, PAGE 102 B)



SCALE: 1"=100'



This is NOT a Survey.

FOR: SARASOTA COUNTY SCHOOL BOARD

SKETCH & DESCRIPTION OF
FLORIDA HOUSE ADDED USE AREA
SECTION 4, TOWNSHIP 37 S., RANGE 18 E.,
SARASOTA COUNTY, FLORIDA

WilsonMiller

Planners • Engineers • Ecologists • Surveyors • Landscape Architects • Transportation Consultants

WilsonMiller, Inc.

6800 Professional Parkway East, Suite 500 • Sarasota, Florida 34240-0400 • Phone 941-557-6800 • Fax 941-557-6800 • Web Site: www.wilsonmiller.com

TASK CODE: MASLD	DRAWN BY: JWB	CHECKED BY: RRC	CAD FILE: S2711-111-K05A	PROJECT NO: S2711-046-001	SHEET 1 OF 2	DRAWING INDEX NO: A2711-046-011A*	REV:
---------------------	------------------	--------------------	-----------------------------	------------------------------	-----------------	--------------------------------------	------

A strip of land lying 20.00 feet south of the south line and 25.00 feet east of the east line of the following described lease area:

A parcel of land lying in Northeast 1/4 of the Southeast 1/4 of Section 4, Township 37 South, Range 18 East, Sarasota County, Florida and described as follows:

COMMENCE at the intersection of the south right-of-way line of Wilkinson Road (variable width public right-of-way) and the west right-of-way line of Beneva Road (84-foot wide public right-of-way) as recorded in Road Plat Book 1, Page 102, Public Records of Sarasota County, Florida; thence S.00°15'18"W., along said west right-of-way line, a distance of 959.94 feet; thence N.89°44'42"W., a distance of 80.00 feet to the POINT OF BEGINNING; thence S.00°15'18"W., a distance of 145.00 feet; thence N.89°44'42"W., a distance of 220.00 feet; thence N.00°15'18"E., a distance of 145.00 feet; thence S.89°44'42"E., a distance of 220.00 feet to the POINT OF BEGINNING.

NOTES:

1. UNLESS IT BEARS THE SIGNATURE AND THE ORIGINAL RAISED SEAL OF A FLORIDA SURVEYOR AND MAPPER, THIS SKETCH, DRAWING, PLAT OR MAP IS FOR INFORMATIONAL PURPOSES ONLY.
2. BEARINGS SHOWN HEREON ARE RELATIVE TO THE WEST RIGHT-OF-WAY LINE OF BENEVA ROAD BEING S.00°15'18"W.
3. THIS IS A SKETCH ONLY AND DOES NOT REPRESENT A FIELD SURVEY.

FOR: SARASOTA COUNTY SCHOOL BOARD

This is NOT a Survey.

SKETCH & DESCRIPTION OF
FLORIDA HOUSE ADDED USE AREA
SECTION 4, TOWNSHIP 37 S., RANGE 18 E.,
SARASOTA COUNTY, FLORIDA

Wilson Miller

Planners • Engineers • Ecologists • Surveyors • Landscape Architects • Transportation Consultants
Wilson Miller, Inc.

2020 Professional Printing Plant, Suite 200 - Sarasota, Florida 34230-6401 • Phone 941-557-6620 • Fax 941-557-6620 • Web Site www.wilsonmiller.com

TASK CODE: MASLD	DRAWN BY: JWB	CHECKED BY: RRC	CAD FILE: S2711-111-K05A	PROJECT NO: S2711-046-001	SHEET 2 OF 2	DRAWING INDEX NO: A2711-046-011A*	REV:
---------------------	------------------	--------------------	-----------------------------	------------------------------	-----------------	--------------------------------------	------